

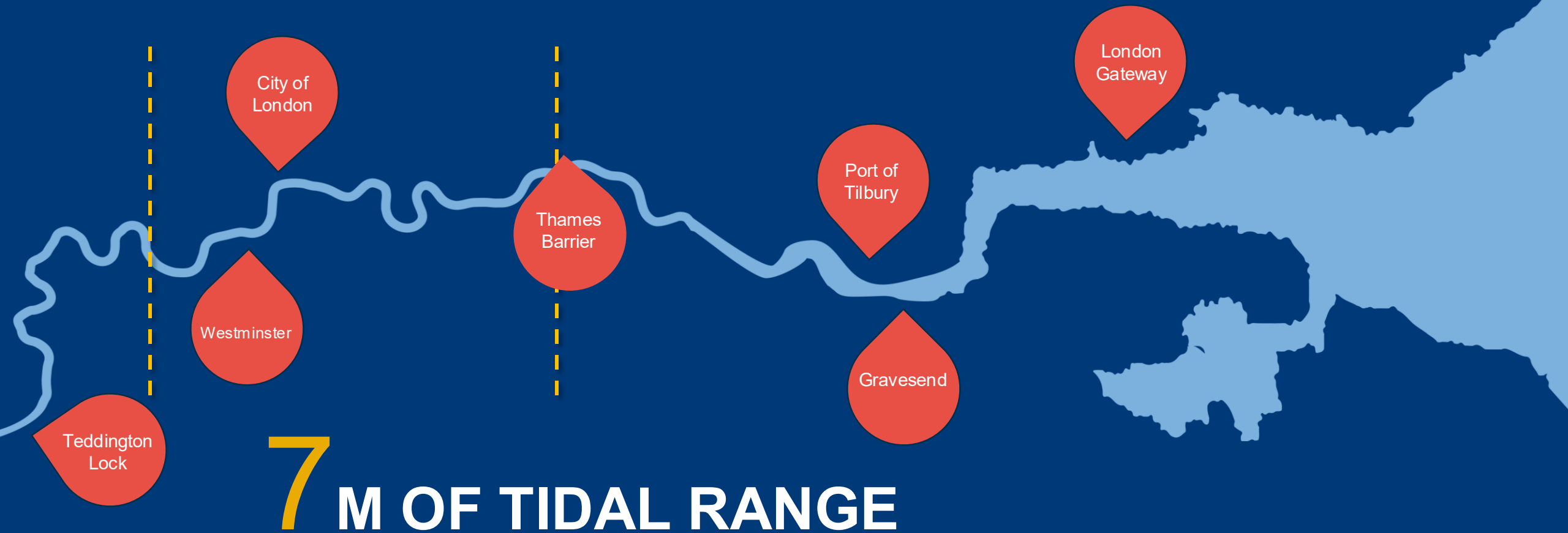
# PORT OF LONDON

**Siân Foster**  
**Director of Corporate Affairs**  
**December 2025**



# 150 KM OF FAST-FLOWING RIVER

PORT OF  
LONDON  
AUTHORITY





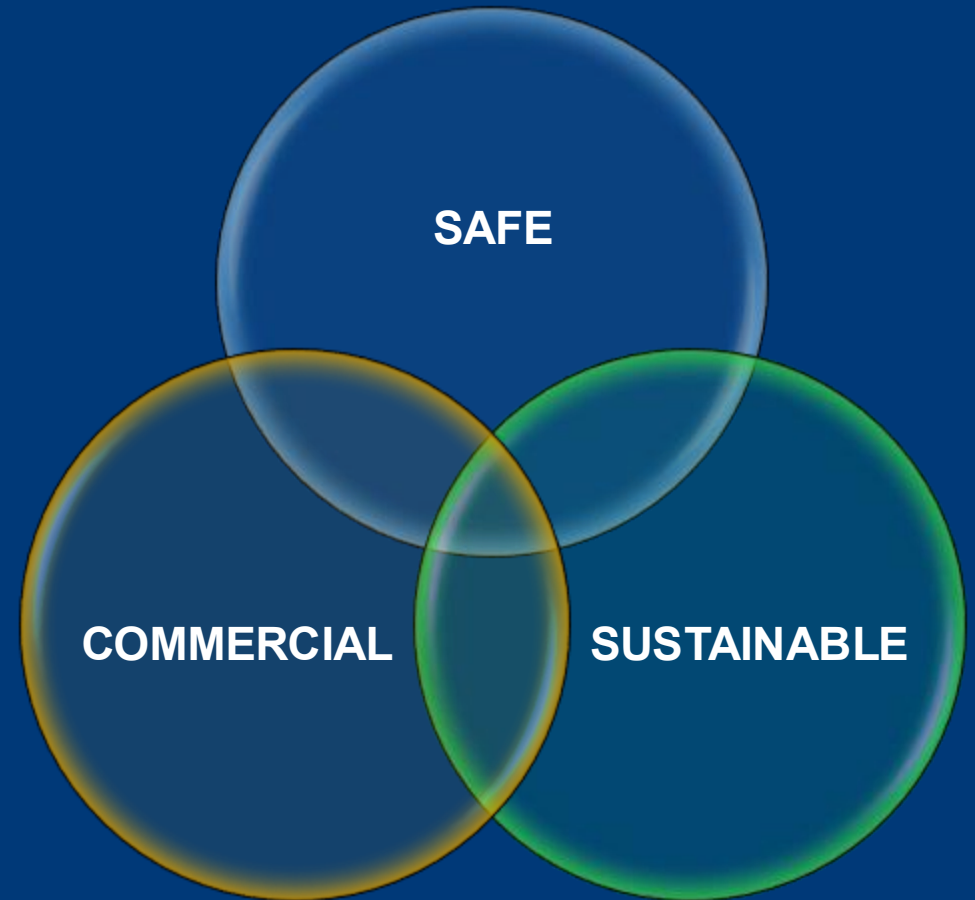
UK'S BIGGEST PORT. NET ZERO BY 2040.

PORT OF LONDON  
AUTOTUG

# #1

## THE PLA: WE PROTECT AND IMPROVE THE TIDAL THAMES FOR ALL

- **Our mission: a thriving river, home to the UK's number one port**
- We are a trust port. We have no shareholders and operate for the benefit of customers and stakeholders now and in the future
- We work with industry, environmental groups and government to achieve our joint vision for the river and the wider Thames Estuary region





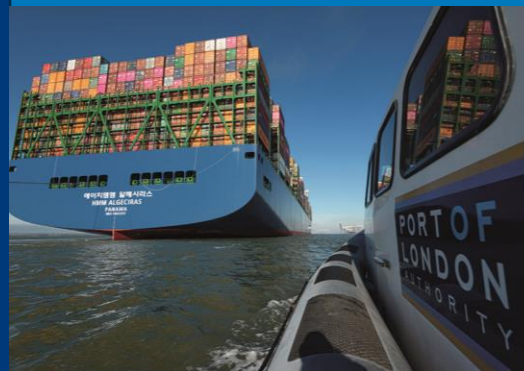
# THAMES VISION 2050



PORT OF  
LONDON  
AUTHORITY



## Trading Thames



### The No. 1 Net Zero UK trading hub

The country's largest and most competitive port, closest to the UK's biggest market, producing Net Zero emissions.



## Destination Thames



### A place to live, visit, play and enjoy

Accessible to all, a national and international for the city and the country.



## Natural Thames



### Clean air, water and land supporting diverse wildlife

A clean river, free of sewage, waste and other pollution.

# THE PLA IN NUMBERS

51.9<sub>m</sub>

TONNES OF GOODS  
HANDLED IN 2024

9<sub>m</sub>

PASSENGERS

2.64<sub>m</sub>

TONNES INLAND  
WATERWAYS FREIGHT

719

SPORTING  
EVENTS

1

SERIOUS  
NAVIGATIONAL  
INCIDENT

41.9<sub>k</sub>

LIGHT FREIGHT  
PACKAGES

400+

RIVER CLEAN UP  
EVENTS  
SUPPORTED

PORT OF  
LONDON  
AUTHORITY

# THE PLA IN NUMBERS

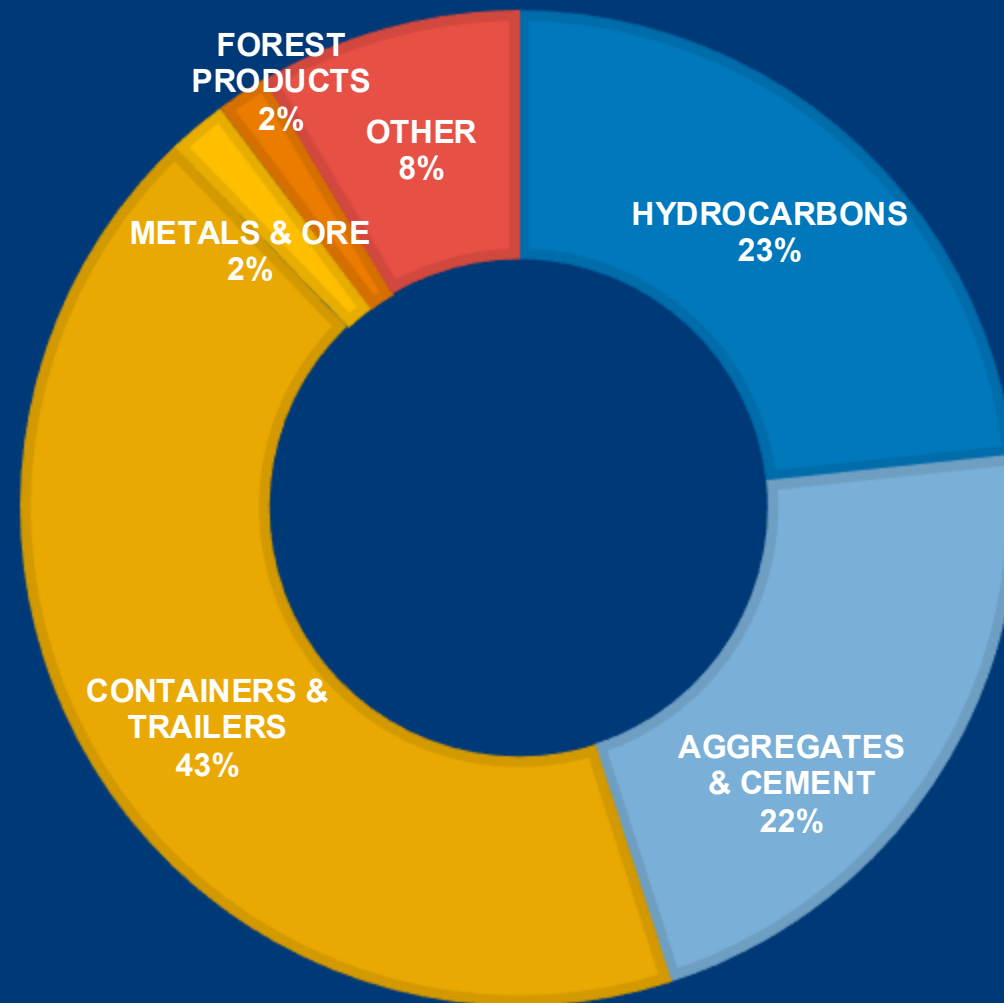
13.7k 99.5%

PILOTAGE ACTS

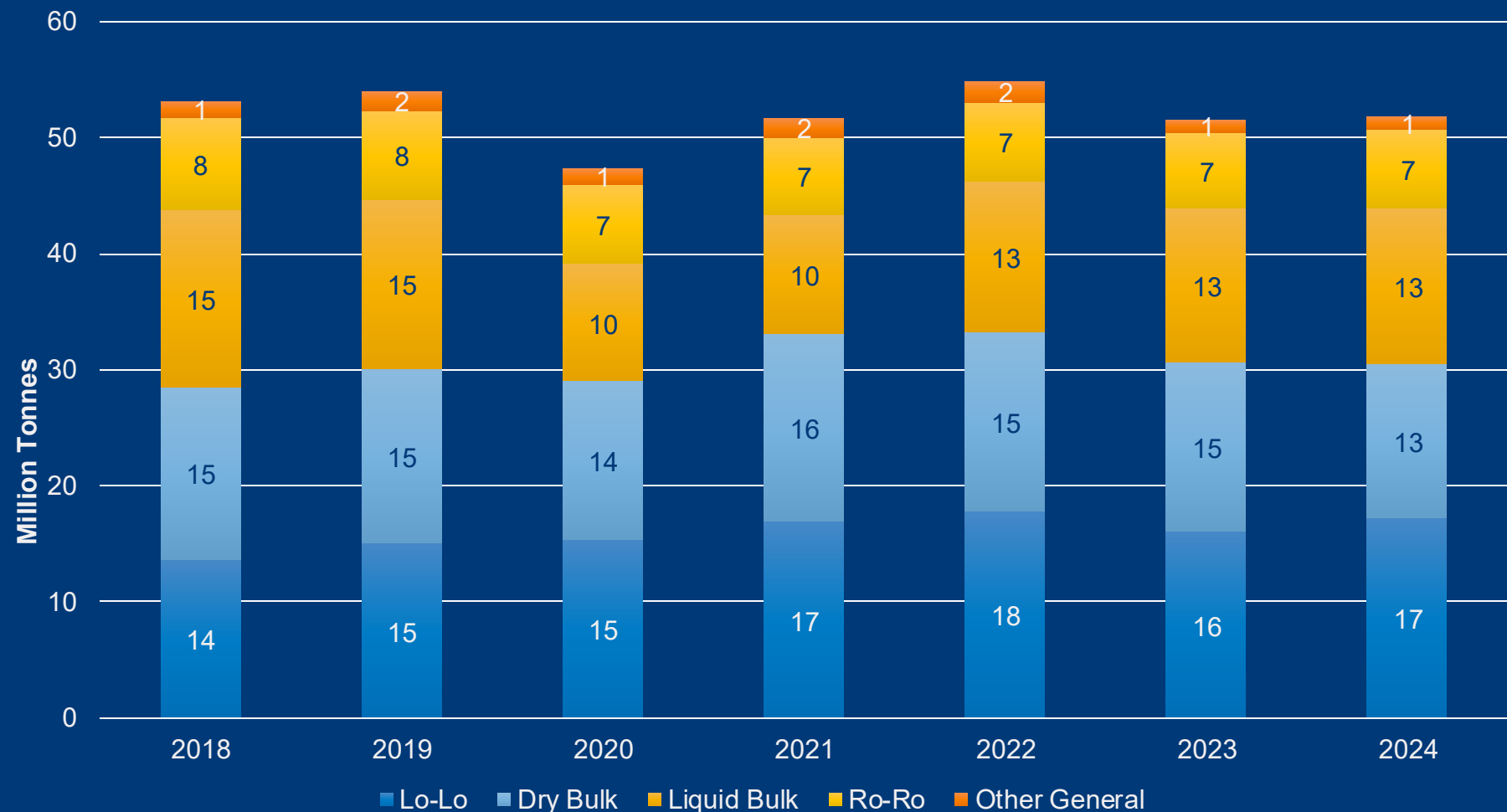
SERVICE LEVEL

PORT OF  
LONDON  
AUTHORITY

TRADE BY TYPE



# PLA Cargo Volumes (million tonnes)



2025 set to  
be the biggest  
in 50 years



# INVESTING IN GROWTH

## UK'S LEADING PORT; NET ZERO BY 2040

# PEOPLE AND CAREERS



- 470 employees
- 48,000 FTE Jobs supported
- 120+ pilots
- Our trainee pilot scheme unlocks the pathway to working on the biggest ships in the world
- Our apprenticeship programme kickstarts long-term careers on the Thames and the wider marine sector

# MARINE CENTRE TRANSFORMATION PROGRAMME

---

- Growth plans from 55Mt to c.78Mt by 2050
- Focusing on navigation safety
- Increase in passenger services, light freight and recreation use, in central and upper river
- Investment in one world-class control centre
- A model that can respond to continued growth on the river and deliver Thames Vision 2050
- A model that can respond to significant increase in passage planning and scheduling requirements



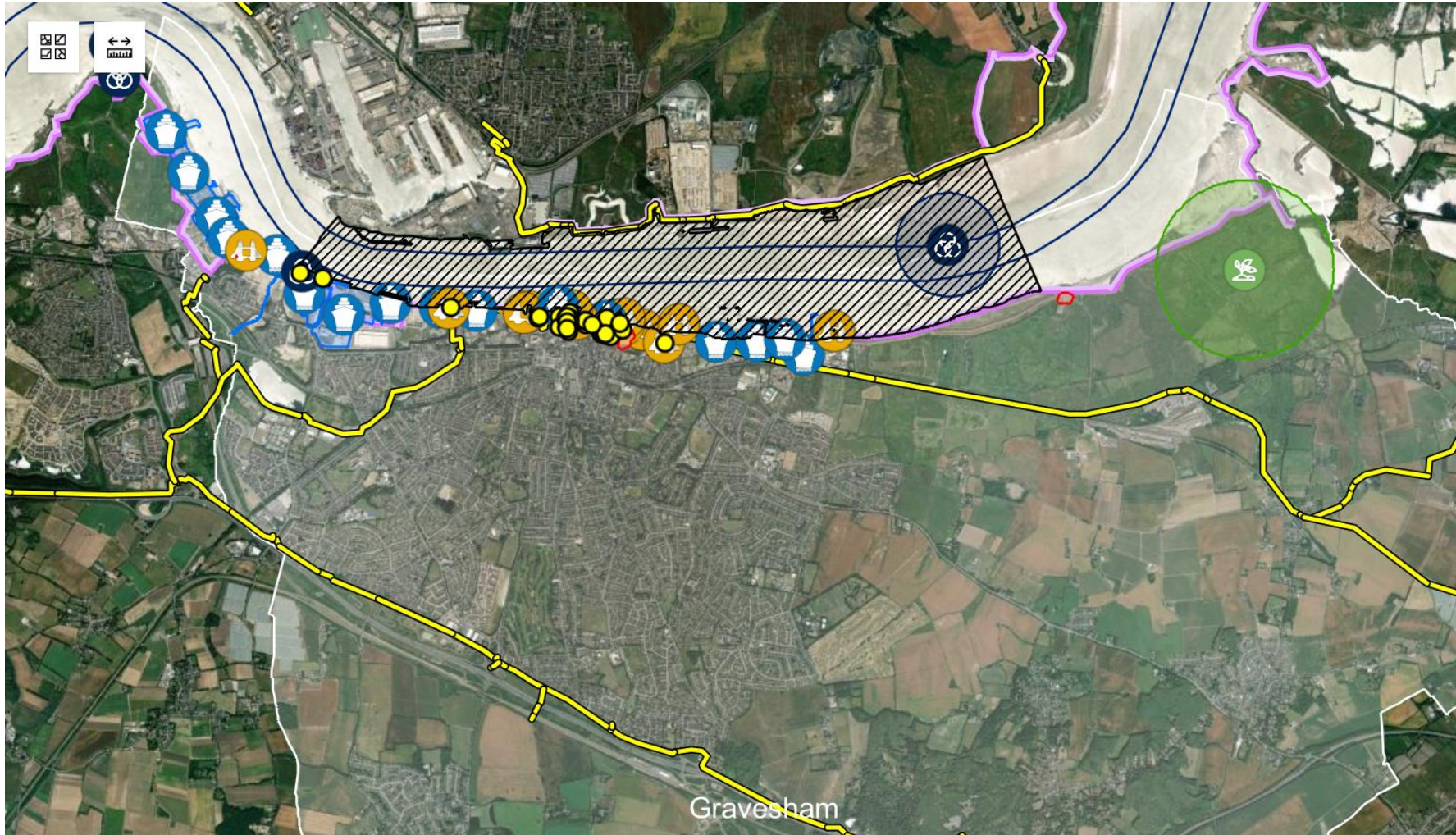


# SUSTAINABLE GROWTH: NEW FUELS





# TIDAL THAMES MASTERPLAN



The Tidal Thames Masterplan engages with riparian councils and authorities, businesses, sports and nature organisations to identify sites for economic development, for nature and biodiversity, and for tourism and physical activity.

We are working borough-by-borough to develop a comprehensive map of the riverside in those council areas.

# SUSTAINABLE GROWTH: INVESTING IN OUR COMMUNITIES

## IMPACT STATEMENT AND KEY OUTCOME AREAS







# THANK YOU